



TRANSIENT LIMITER (TLX80)

Superior Electrical Panel Surge Suppression



Effective

80,000 amps of protection in all modes, L-N, L-G, L-L, and N-G without undue leakage

Versatile

A range of voltages and configurations for industrial, commercial, and home applications

Easy-to-Install

Compact design for easy installation with optional flush mounting

Durable

Designed with dual-redundant varistor networks and internally fused

Lightning induced transients and other power anomalies can easily degrade or destroy unprotected electronics and computer equipment. Suitable for all AC power applications, the TLX80 line of nipple-mounted transient voltage surge suppressors (TVSS) protects sensitive electronics from these damaging transients and high-energy disturbances. All models are designed for use at subpanels and service entrances of light industrial, commercial, and residential applications and feature watertight, dust proof, NEMA enclosures.

The TLX80 line can be used indoors or outdoors, mounted to the electrical panel through a direct 1/2" or 3/4" nipple connection. Additional overcurrent protection is not needed since each unit is internally fused. LED status indicators allow each varistor network to be visually monitored, with additional contacts to enable remote monitoring.

TLX80 surge suppressors are fully automatic, reacting immediately to clamp damaging surges, with no restriction on the amount of load current. These compact and durable devices offer cost-effective, high-capacity protection along with application versatility - features that make the TLX80 line of surge suppressors the ultimate solution to your surge suppression needs.

All of our TLX80 surge suppressors are backed by a 10 year manufacturer's warranty.





Configurations

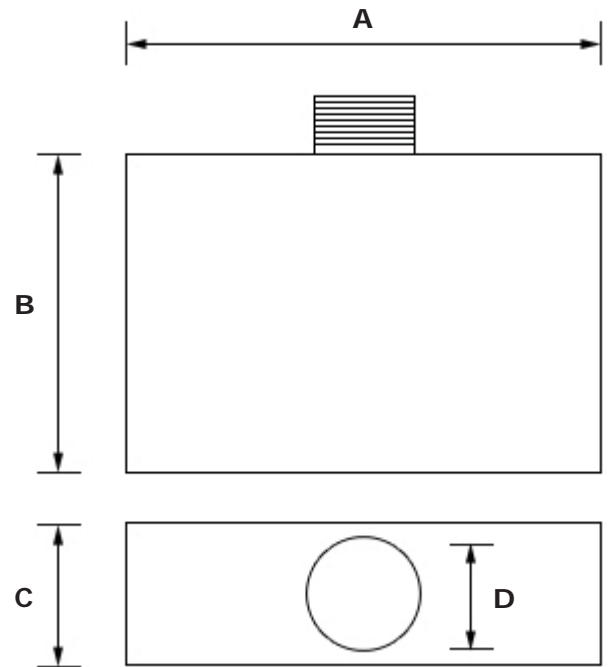
Model #	Operating Voltage	Wire Configuration	UL1449 Clamping Voltage
TLX80-120-1	120	[1 phase] 2-wire + GND	400
TLX80-240-1	240	[1 phase] 2-wire + GND	800
TLX80-120/240-2	120/240	[Split phase] 3-wire + GND	400
TLX80-120/208-3Y	120/208	[3 phase wye] 4-wire + GND	400
TLX80-220/380-3Y	220/380	[3 phase wye] 4-wire + GND	800
TLX80-240/415-3Y	240/415	[3 phase wye] 4-wire + GND	800
TLX80-277/480-3Y	277/480	[3 phase wye] 4-wire + GND	800

† Center Phase Grounded Delta

Operating Parameters

Surge Capacity per Phase	80,000 amps
Modes Protected	L-N, L-G, L-L, N-G
Indication	Color LEDs
Temperature Limits	-40 C to 85 C
Frequency	50-60 Hz
Response Time	<5ns
Enclosure Rating	NEMA 1, 2, 3, 3R, 4, 4X, 12, 13
UL 1449 3rd Edition Listed	Yes*
AIC Rating	100 kA
Warranty	10 years
Pigtail Wire Sizes	#10-12 AWG, 18" length
Remote Monitoring	Yes (#22 AWG)
Surface Mounting Feet	Yes
Flush Mount Option	Yes

* Except 240-1



Dimensions & Weights

Voltages	A (inches/mm)	B (inches/mm)	C (inches/mm)	D (inches/mm)	Weight (lbs/kg)
120, 240, & 120/240	4 / 102	4 / 102	2.4 / 61	0.5 / 12.7	2.1 / 0.95
3Y	9.3 / 236	4.93 / 125	3 / 76	0.75 / 19	5.5 / 2.5